

USB Encryption Stick Secure Data**INTRODUCTION**

The USB Encryption Stick Secure Data provides data encryption for Windows platforms. It securely encrypts all types of files (text, images, etc.) on hard disk, SSD, memory cards and USB memory. You can keep your private data safe, the Encryption-Stick uses an AES 256bit hardware key to encrypt files. The use of a graphical user interface is user-friendly, with simple drag and drop the selected files or directories are encrypted or decrypted.

You can encrypt/decrypt individual files and directory contents as well as multiple files and directory contents. For the directory contents only the desired directory has to be selected. If you select a directory, only the files in it are encrypted/decrypted.

USB Encryption Stick Secure Data

775-2210-01

Features

- USB 2.0 interface for Windows / USB 3.0 compatible
- AES 256bit hardware encryption
- Any kind of files (images, text, etc.) can be processed
- Password protected encryption / decryption process
- Easy encryption / decryption via drag and drop (user interface)
- Selection: individual password for each entry or master password
- SETUP version and PORTABLE version of software program are both provided
- Support Windows XP/VISTA/7/8/10

Operation Instructions

Software Download

- SETUP VERSION (SuperVaultPRO_setup.exe)
<https://www.scm-pc-card.de/ftp/DataELock/SuperVaultPRO-setup.zip>

Setup Version: requires this installation.

- PORTABLE VERSION (SuperVaultPRO_portable.exe)
<https://www.scm-pc-card.de/ftp/DataELock/SuperVaultPRO-portable.zip>

Portable Version: is not installed on the computer, but loaded into the main memory and must be executed each time the computer is restarted

USER MANUAL

<https://www.scm-pc-card.de/ftp/DataELock/Manual-English.zip>

Download the desired version and unpack it into a directory of your choice!

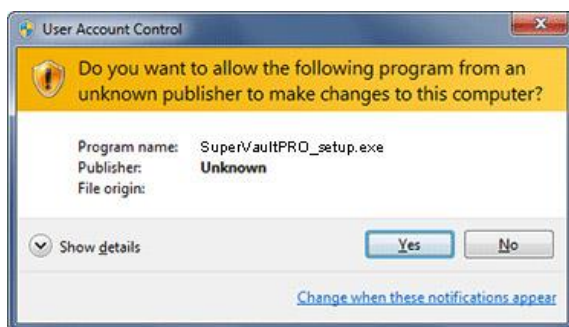
Software Installation

(Only SETUP VERSION requires this installation)

1. Double-click on the "SuperVaultPRO_setup.exe" program icon to run the setup program.
SETUP



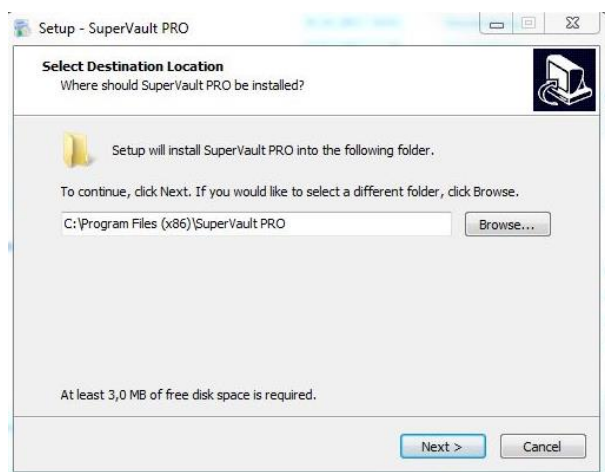
2. A "User Account Control" dialog will show up for your confirmation; please click on "Yes" to proceed.



Press the Button "YES"

3. Follow the on-screen instructions to complete the installation procedure.

The specified installation directory in the "Select Destination Location" window can be changed via the "Browse" button or by entering the desired directory

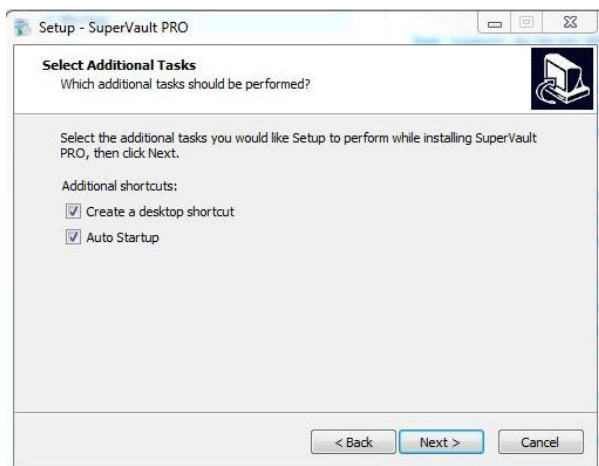


Press the button "Next>"

USB Encryption Stick Secure Data

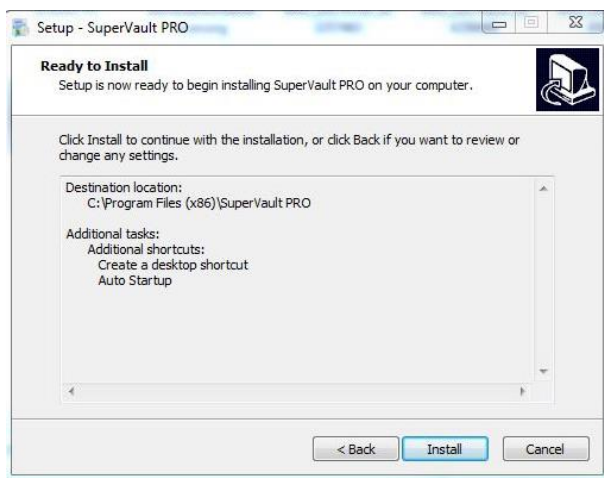
775-2210-01

The fields "Create a desktop shortcut" and "Auto Startup" can be switched off by clicking on them.



Press the button "Next>"

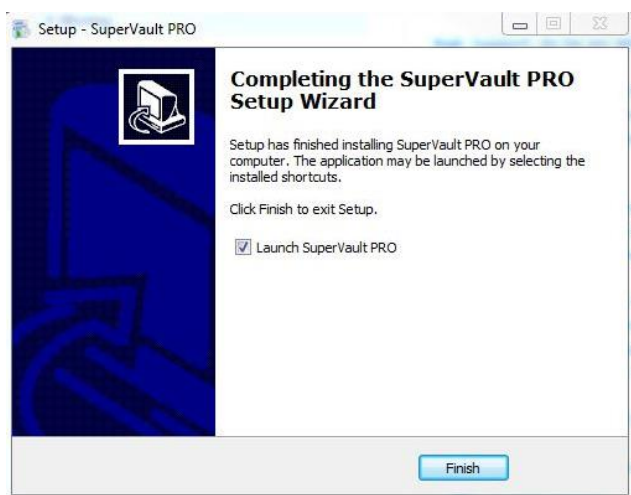
In the dialog shown below, the previously selected information is displayed again. These could still be changed by the ICON "Back".



Press the button "Install"

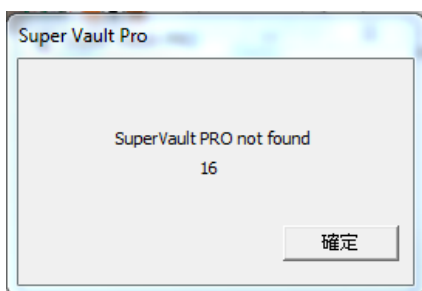
USB Encryption Stick Secure Data

775-2210-01



Press the button "Finish"

Note: select the "Launch SuperVault Pro" field if the Encryption Stick has been connected to the USB. Otherwise the following message will happen. "SuperVault PRO not found". A counter with 30 seconds appears. If the USB stick has not been inserted by the end of the time, the window closes automatically.



4. After successful installation you will find the icon "SuperVault Pro" on the DESKTOP and under programs.



USB Encryption Stick Secure Data

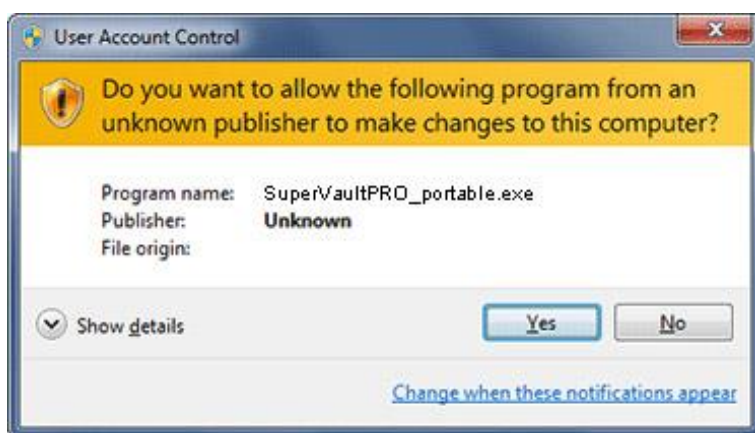
775-2210-01

Using the USB Encryption Stick Secure Data and software

1. Connect the "Encryption Stick" to a free USB slot on the PC. The system recognizes the stick automatically and installs the drivers.
2. Start the program "SuperVault Pro", or the portable version of the program "SuperVaultPRO_portable.exe" with a double-click on the icon.



3. A "User Account Control" dialog will show to ask for your confirmation; please click on "Yes" to proceed.



Press the button "Yes"

4. The Encrypt/Decrypt tool box will show up; now it's ready to encrypt/decrypt data.



Note: that displayed window "Super Vault PRO" is not closed when clicking the x in the header, but stored in the Systray and can be accessed from there again or closed.



Systray

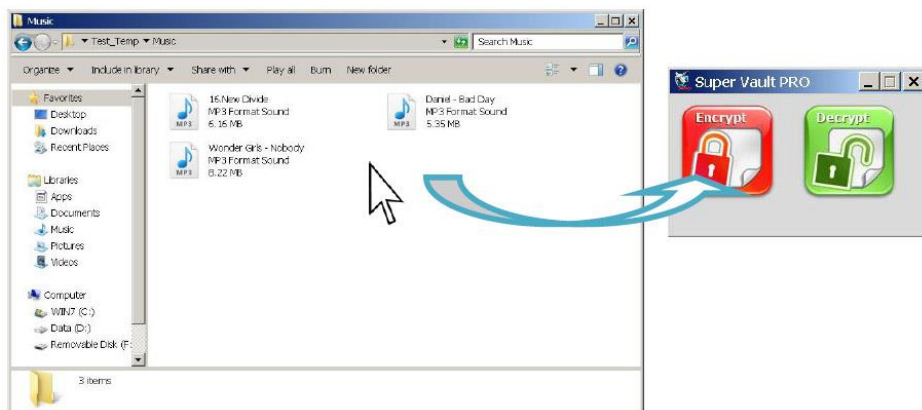
The tool box is automatically closed when removing the USB Encryption Stick. When the USB Encryption Stick is reconnected, the tool box will reopen automatically.

Exceptions:

- If the program has been closed and is no longer visible in the Systray.
- When restarting the computer when the portable version was started.

Data Encryption

1. Open the file manager and drag and drop the desired files or "directory contents by selecting the directory" on the Encrypt icon of the user interface. The user interface accepts individual files / directory contents as well as multiple files / directory contents simultaneously. Where the directories are encrypted only the files contained therein and only in the main directory, nothing changes in the directory itself.



Note: Only files in the root directory are encrypted, not files that are in a subdirectory. The names of the selected files change not just the file type (example: "Test Type: Text Document" becomes "Test.txt Type: SECPRO"). After the encryption of a "directory content by selecting the directory", individual files contained therein can be decrypted again.

Example:

Directory structure = Windows \ Pictures \ Private

If the Windows directory is selected, the files in it are encrypted, but not in the Pictures and Pictures \ Private directory.

If the files are to be encrypted in the Private directory, they must be selected directly.

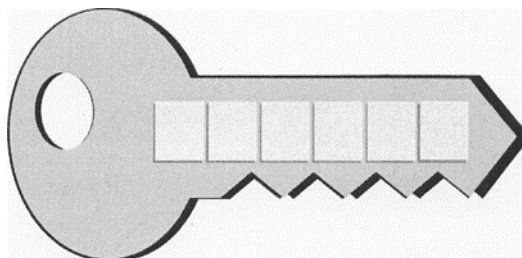
USB Encryption Stick Secure Data

775-2210-01

2. Enter the password for decryption twice, and then press OK.

Password length between 4-32 characters English Letters (upper/lower case) / numbers / symbols

Note: Encrypted files and directories can no longer be decrypted without the password.

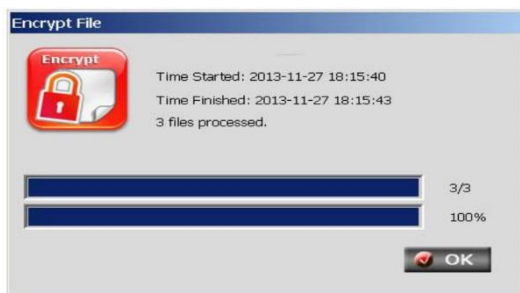


PW _____

The function "**Save as Master Password**" allows the tool to remember the password. If the checkbox next to "Use Master password" is set, the tool automatically inserts the password. Thus, you do not have to enter the password each time you encrypt files.

When decrypting files, the password is always requested

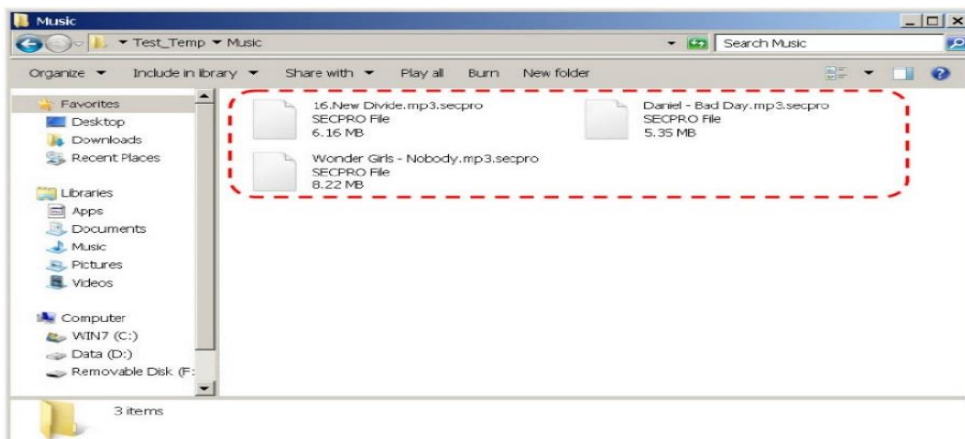
3. The tool will start the encryption process immediately; when it's done, press OK.



USB Encryption Stick Secure Data

775-2210-01

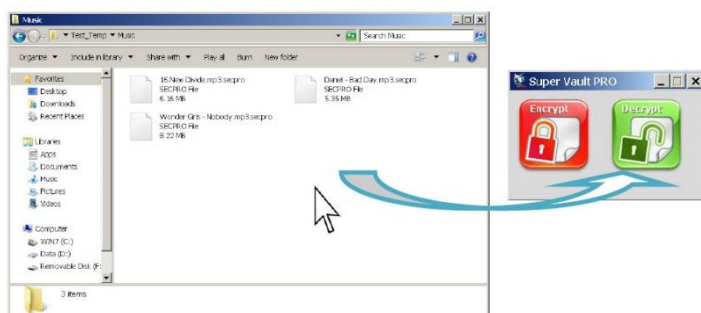
4. Data encryption is done. Encrypted files are displayed as a SECPRO file.



Note: If directories are selected, only the files they contain will be encrypted, subdirectories and their contained files will not be encrypted.

DATA DECRYPTION

1. Open the file explorer, and then drag and drop the file/ „directory contents by selecting the directory“ to be decrypted into the Decrypt icon in the tool box. The tool box accepts single file/folder or multiple file/folder.



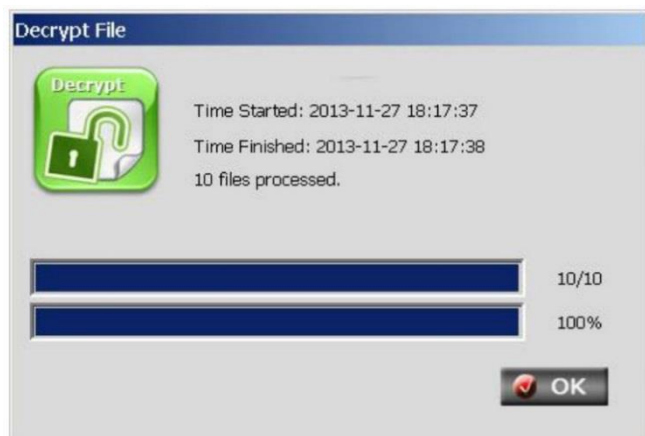
USB Encryption Stick Secure Data

775-2210-01

2. Enter the password for decryption, and then press OK.
Note: The files / directory contents cannot be decrypted if you have forgotten the password.



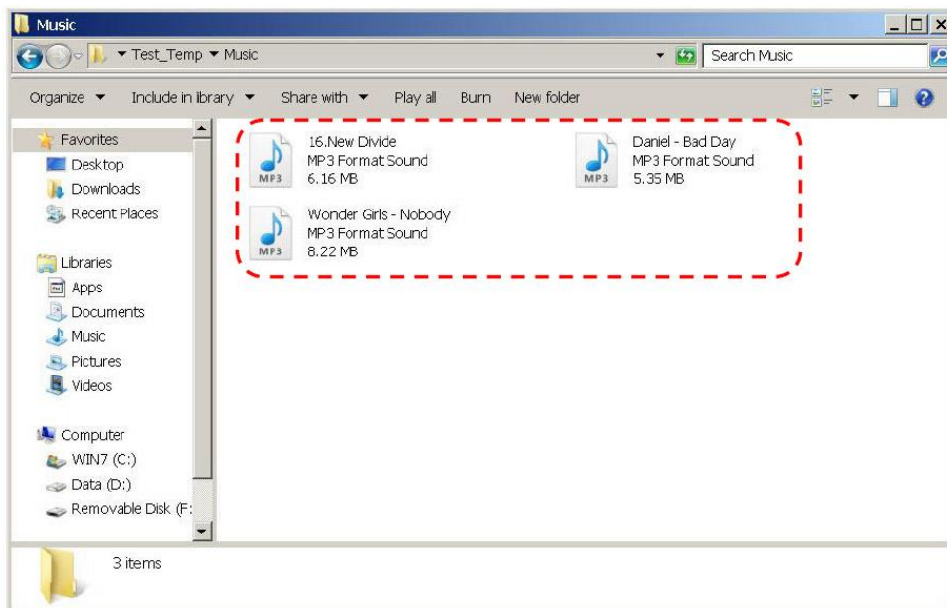
3. The tool will start the decryption process immediately; when it's done, press OK.



USB Encryption Stick Secure Data

775-2210-01

4. Data decryption is done.



Note: Directories are not decrypted, only the files contained in the main directory.