



YOUR WORLD, **VERIFIED.**

uTrust Key Manager Software

User Manual

Application to configure uTrust FIDO2 Security Keys over all USB interfaces

Use the [uTrust Key Manager Software](#) to configure OTP and certain PIV functions on your uTrust FIDO2 Security Key on Windows 10 and 11 operating systems. The tool works with any currently supported uTrust FIDO2 Security Key. You can also use the tool to check the type and firmware* of a uTrust FIDO2 Security Key.

**Firmware revision displays as "Unknown" for 3.16, 3.19, 3.20 tokens*

Revisions:

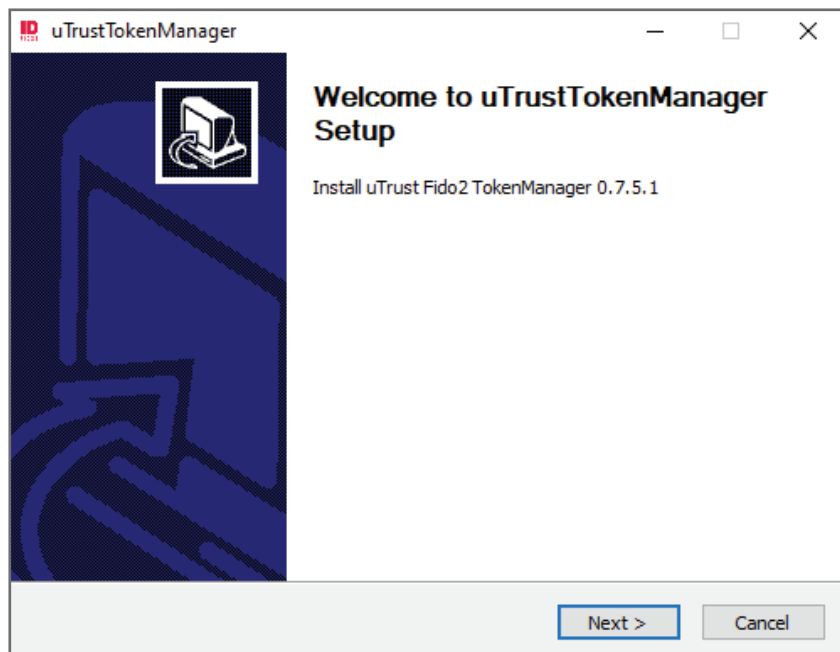
Rev 1.0.0.0

Downloads

- Windows 10 and 11 Download
- uTrustTokenManager_1.0.0.0

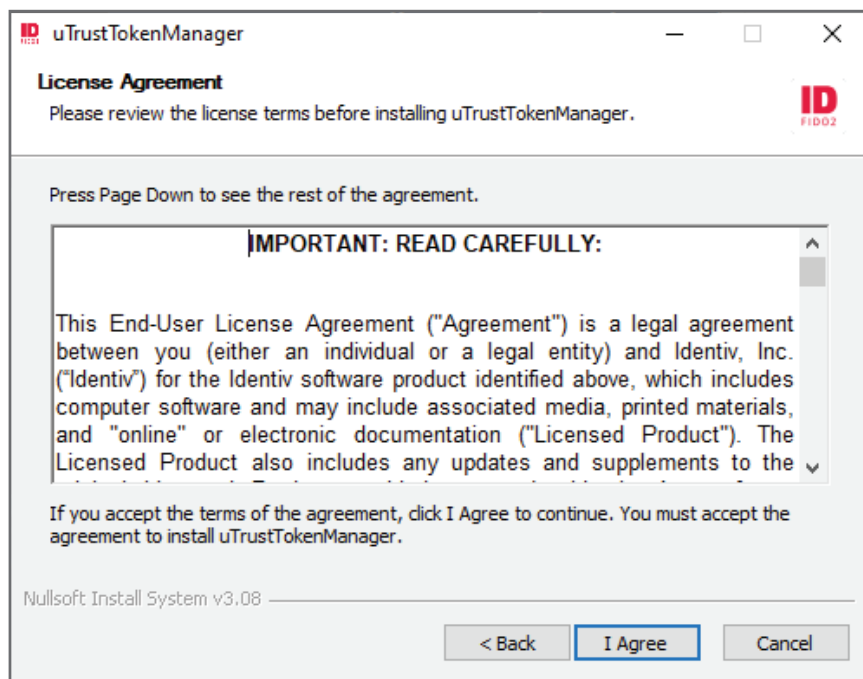
Installation

Locate the file uTrustTokenManager_1.0.0.0 in your downloads folder and double click to launch the installer. You may be asked, "Do you want to allow this application to make changes on your computer?". Select, "Yes".



The uTrustTokenManager installation assistant window will appear. Click "Next" to proceed with installation.

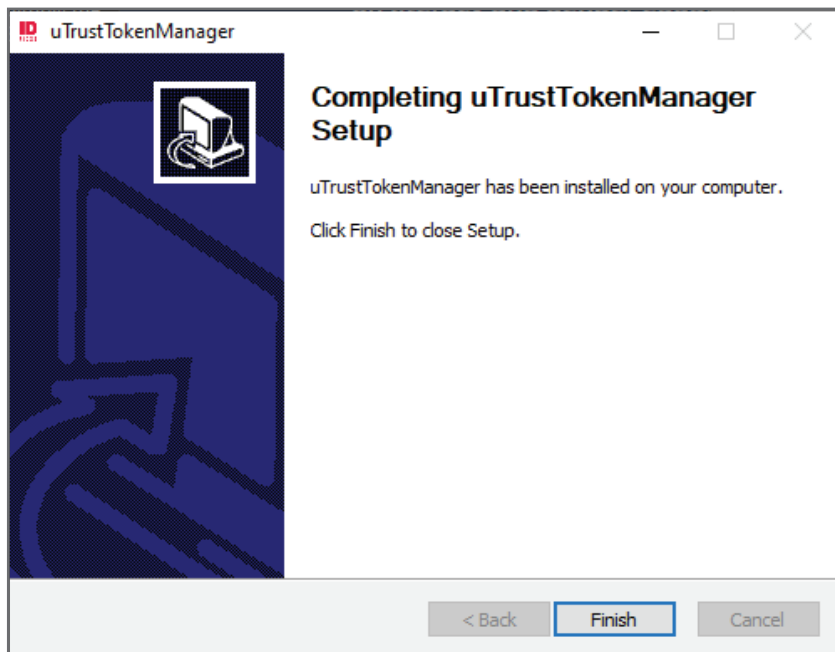
You will be presented with the End User License Agreement. If you accept the terms of the agreement, click "I Agree" to continue. You must accept the license agreement to install the uTrustTokenManager.



The uTrustTokenManager will install files to your computer. You may see a window stating that Microsoft Visual C++ will need to install files to the computer. You will need to allow this in order to use the uTrust Token Manager.

Once installation is complete you will be presented with a screen acknowledging the setup is complete. Click "Finish" to close the setup.

A folder labeled "Identiv uTrust FIDO2" will be created and placed in your startup menu. Open this folder and select uTrustTokenManager to begin managing your uTrust FIDO2 NFC and NFC+ security keys.



Uninstall

To uninstall, open the startup menu and expand the Identiv uTrust FIDO2 folder. Right click on the uTrustTokenManager and choose "Uninstall".

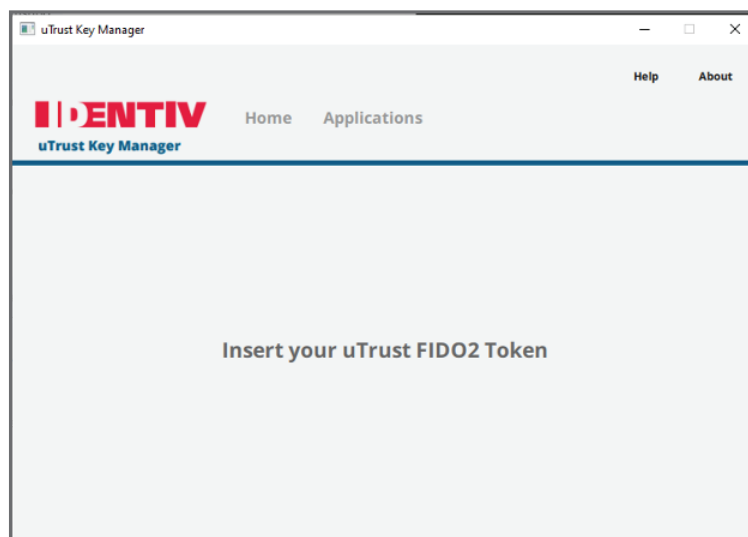
The system will present you with a "Programs and Features" window. Locate and click on uTrustTokenManager then click "Uninstall/Change" from the top of the window.

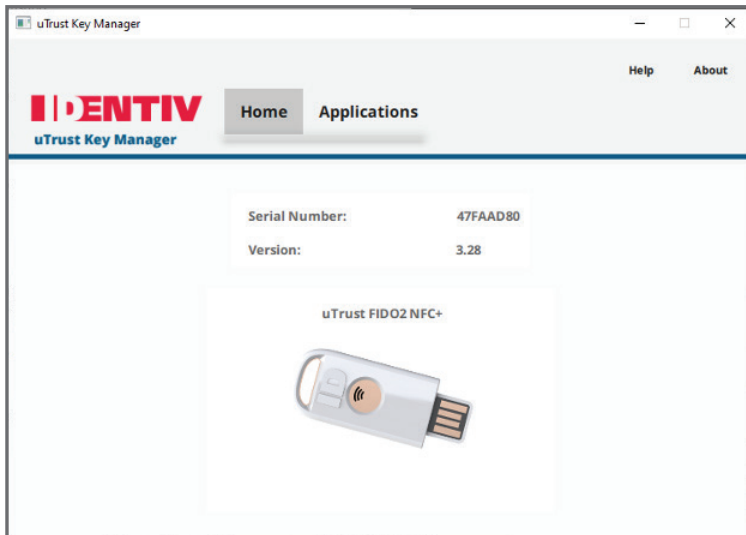
You will see a window that asks, "Do you want to allow this application to make changes to your device?". Click yes to complete uninstalling.

Features and Functionality

Plug and Play

Simply insert your uTrust FIDO2 Security Key to see available settings





Simple Key Identification

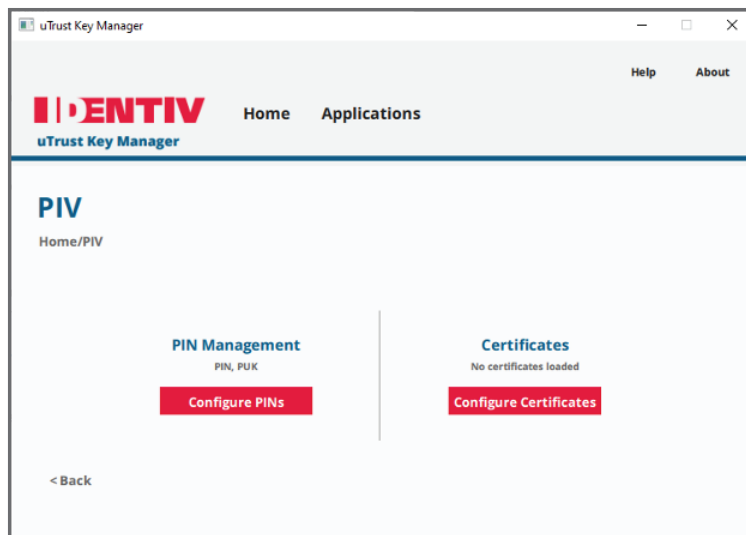
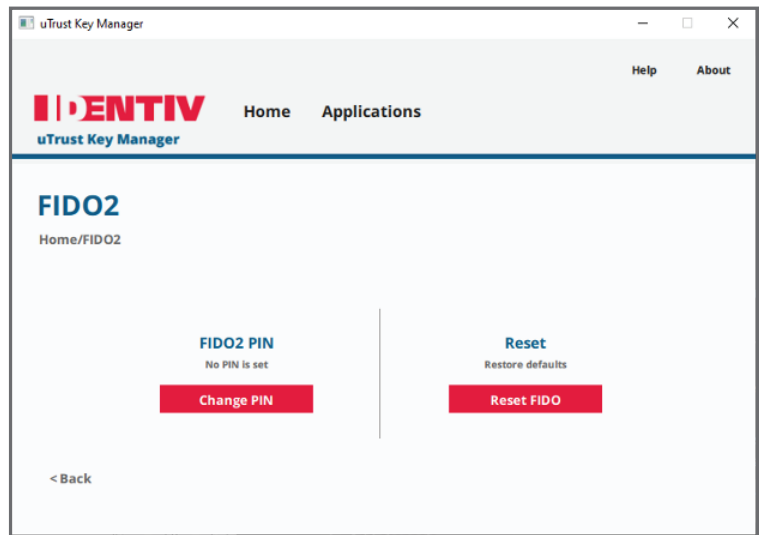
uTrust Key Manager provides a quick way to identify the model, firmware, and serial number of your uTrust FIDO2 Security Key.

In order to manage the FIDO2 applet you will need to launch the uTrust Security Key Manager with **admin rights**. To do this, go to the start-up menu and locate the Identiv uTrustFIDO2 folder. Expand the folder and right-click on the uTrustTokenManager application. Hover over “More” in the dropdown menu and select “Run as administrator”.

Configure FIDO2 Functionality

Under the Applications tab for supported uTrust FIDO2 Security Keys:

- Change or set a PIN-code for using FIDO2 with your uTrust FIDO2 Security Key
- Reset your FIDO2 PIN-code
- **WARNING:** Resetting your pin code will also remove any stored FIDO2 keys



Configure PIV Functionality (NFC+ only)*

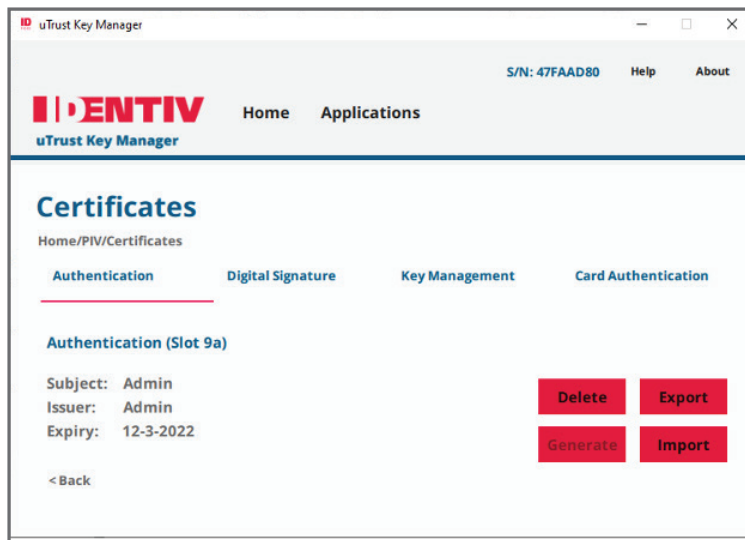
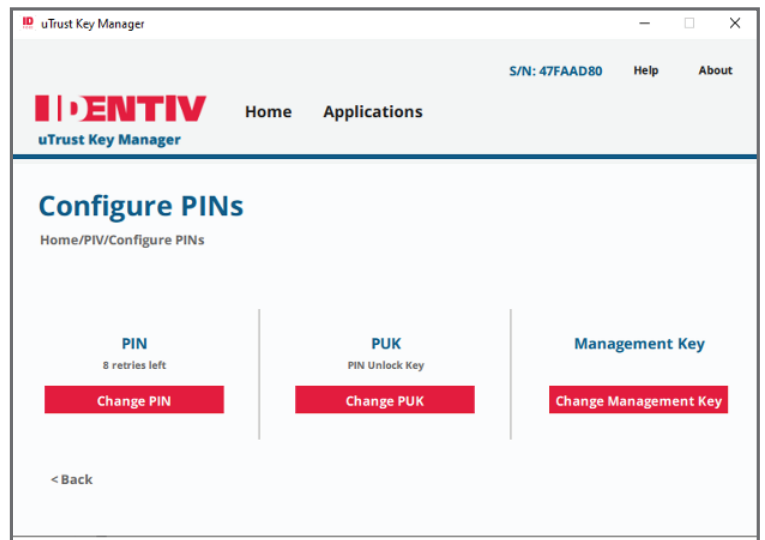
*This menu item is enabled if and only if the key is NFC+

Under the Applications tab for supported uTrust FIDO2 Security Keys:

- Change or set a PIN and PUK code for using PIV with your uTrust FIDO2 Security Key
- Configure certificates

In “Configure PINs” option

- Change the PIN associated with your PIV
- Change the PUK associated with your PIV
- Change the Management Key



In “Configure Certificates” option

You can manage certificates for Authentication, Digital Signature, Key Management, and Card Authentication

- Import certificates from your PC
- Export certificates to your PC
- Generate new certificates
- Delete certificates from your key*

**Certificate deletion supported on fw v3.30 and up*

Configure uTrust FIDO2 Security Key OTP

Under the Applications tab:

- Set the OTP Secret Key*

** OTP Secret Key must be 32 characters long*

